

## 5 Steps to Watering Well

Sacramento area households use an average of 304 gallons of water per day

- Approximately 60% of treated water goes to landscape
- At least ½ of that is wasted due to evaporation and runoff

Save money and use this precious resource wisely!

### The 5 steps

1. Know your water use
2. Evaluate your irrigation system
3. Repair and adjust your irrigation system
4. Be more efficient
5. Find help

### Step 1 - How much water do you use?

- Check your bill
  - Use the Water Meter Reading section for when and how much you use
- Use your water meter to determine flow rate
  - Low flow indicator/leak detector
  - Remember the units cubic foot -- 1 CF = 7.48 gallons of water
  - Do the math to see how much water is used by each station/zone
    - Locate your meter and read the meter
    - Run a zone for a reasonable amount of time (avoid runoff)
    - Read the meter again
    - Subtract the first reading from the second
    - Answer will be in cubic feet, multiply by 7.48 to get the number of gallons
    - Divide the gallons by the time the zone ran to get gallons per minute
    - Bonus! Roseville's Water Budget Calculator will do the math for you!

**Flow indicator:** Measures water flow coming through the meter.

**Leak Indicator:** Measures very slow flow. If this continues to turn when both indoor and outdoor water have been shut off, it likely indicates a leak.

**Meter Register:** Numbers with a white background measure 1,000 of gallons

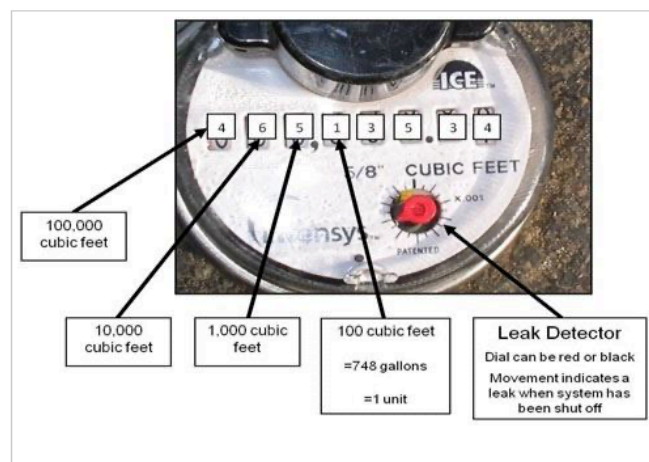
Numbers with a black background measure increments in hundreds, tens and single gallons used, up to 999. It rolls over when the # of gallons reaches 1,000.



Courtesy Oklahoma City

Does your meter register have more than 7 numbers. Here's a more detailed description. Read on...

## Reading Your Water Meter



### Step 2 – Evaluate

- Turn your irrigation system on one Station/Zone at a time
- Walk about to check it out
- Look and listen
  - Do you see water bubbling or shooting up?
  - Do you hear hissing?

### Step 3 – Repair & Adjust

- Fix ASAP because procrastination results in water waste
- Fix it properly
  - Uniform equipment (equipment by the same manufacturer and same flow rates)
  - Dig if necessary

### Step 4 – Be More Efficient: Manage – Maintain – Modernize!

- Learn about your controller
  - Read the manual, download from the manufacturer
  - Learn your controller's functions – programs, start times, seasonal adjust, interval days
  - Schedule your controller properly
- Maintain the landscape and irrigation system
  - Learn environmentally-responsible landscape practices for a healthy and lush landscape
  - Some resources: [www.bewatersmart.info](http://www.bewatersmart.info), [www.cnps.org](http://www.cnps.org), [www.beyondthedrought.com](http://www.beyondthedrought.com), <https://waterwonk.us/how-much>
  - Maintain your existing irrigation system monthly so it's more efficient
- New technology
  - Sprinklers with high efficiency nozzles (rotary and spray), some with built-in pressure reducers
  - Low-volume retrofit of existing system and use inline emitters
  - Install a weather-based Smart Controller
  - Check with your water provider for incentive programs, [www.bewatersmart.info](http://www.bewatersmart.info)

### Step 5 – Find help

- Discover your water agency's water-efficiency programs, request a Water Wise House Call
- Hire a professional: [www.apldca.org](http://www.apldca.org), [www.qwel](http://www.qwel), [www.greenergardensgroup.com](http://www.greenergardensgroup.com), [www.clca.org](http://www.clca.org), [www.asla.org](http://www.asla.org)

Handout adapted from original by Don Smith, Water Management Coordinator with the City of Folsom, Environmental & Water Resources, for the Regional Water Authority's Blue Thumb Neighbor Program.